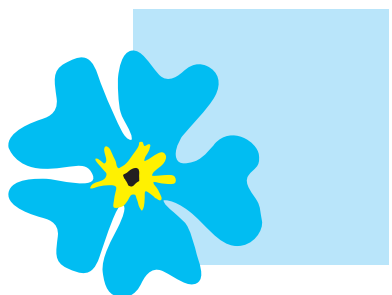
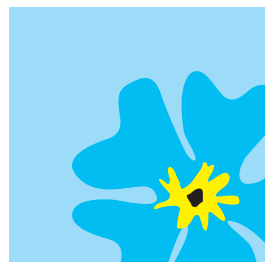
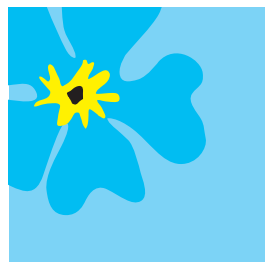
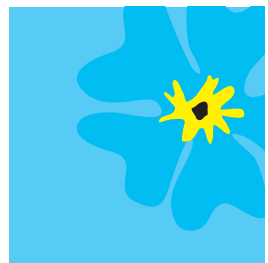


Forget-me-not

leaving your legacy to help future generations of people with multiple sclerosis and their families





How Do I Leave a Legacy to the MS Trust?

Leaving a gift to the MS Trust in your Will need not be complicated; in most cases a solicitor will be able to draft a simple Will from around £100. There are a number ways to leave a legacy, the most common are:

- **Residuary legacy** A percentage of the residue or balance of your will, paid once all expenses and monies to family and friends have been accounted for
- **Pecuniary legacy** A cash gift - any sum of specified money
- **Specific legacy** Personal or household effects, for example, stocks and shares, jewellery, car, property
- **Reversionary legacy** (specific, pecuniary or residuary) Left firstly to a 'life tenant', for example leaving your house to your daughter for her lifetime, thereafter going to others – such as a charity
- **Contingent gift** A gift that has certain conditions attached
- **Insurance policies and savings** Charities can be named as beneficiaries in your life insurance policy
- **Through an 'in memoriam' gift** Whilst not a legacy, some supporters have requested that friends and relatives make an 'in memoriam' donation to the MS Trust instead of sending flowers and wreaths.

What if I have already made a Will?

You can easily amend an existing Will to include a gift to the MS Trust by asking your solicitor to add a "codicil" to your Will.



The Importance of Having a Valid Will

Making a Will is the only way of ensuring that your wishes will be followed after you die. Over 50% of the population die intestate – without a Will; it is then the state’s responsibility to distribute your estate according to pre-set rules, meaning that part, or all, of your estate may go to people who you never intended to benefit.

People often assume that their partner will automatically inherit their estate, however this is not always the case and telling people your wishes, or leaving a letter, is not enough. **In order that your estate is shared among the people you most care about, it’s in your best interest to write a Will.**

A Will also gives you the opportunity to let those you leave behind know your final wishes, for instance, specific funeral arrangements or the use of your body for medical research.

Finally, making your Will gives you the opportunity to leave a lasting legacy to help future generations of people with MS and their families.



Why leave a legacy to the MS Trust?

Multiple Sclerosis is a cruel and life-long condition and is the most common cause of disability in young adults. It affects three times as many women as men and is most often diagnosed in people in their twenties and thirties.

The impact of that diagnosis is terrifying. It can take away the ability to plan for the future and can lead to fear of loss of independence, severe disability and isolation. We don't know what causes MS and as yet, there is no cure. People experience diverse symptoms and encounter different problems, yet many of these symptoms can be alleviated and problems overcome with access to the correct information and support at the most appropriate time.

The MS Trust is a charity which works with and for the 100,000 people in the UK with MS. Our vision is to enable people with MS to live their lives to the full and in order to achieve this we provide:

- information that is tailored to what people want to know
- education for health professionals about what people with MS need
- research into better management of MS
- support for anyone affected by MS

The MS Trust relies on the generosity of individuals to fund all of our services. As a young charity we receive little legacy income and gifts of any size are most gratefully received. However much you can afford to leave the MS Trust you can be sure it will be put to good use. Leaving a legacy to the MS Trust will enable us to continue providing practical support to people living with MS.



Please leave a gift to the MS Trust in your Will

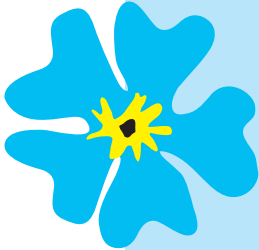
Whilst 67% of people support charities, fewer than 5% include a charity in their Will. Those who do, help to ensure that organisations such as the MS Trust can continue to offer invaluable support to people with MS and their families for years to come. Will you join David and Heather and remember the MS Trust in your Will?

Dear MS Trust,

We thought that you might like to know that in our will we have made a provision to the Trust by way of a legacy.

This gesture will bring hope to others in the future, but for now, we hope it will reflect our respect for a charity that has been so supportive to us over recent months. There have been times when even simple actions from you have helped so much - the information you provide is not just an academic exercise but a means of self-help.

*Many thanks,
David and Heather*



Thank you for taking the time to read this leaflet. If you require any further information on leaving a legacy to the MS Trust, please contact us on 01462 476700 or email info@mstrust.org.uk

To find out more about the work of the MS Trust please call 01462 476700 or visit www.mstrust.org.uk



Multiple Sclerosis Trust
Spirella Building, Bridge Road
Letchworth Garden City
Hertfordshire SG6 4ET

T 01462 476700
E info@mstrust.org.uk
www.mstrust.org.uk

Registered charity no. 1088353